

The white z21



Interface description

Roco

FLEISCHMANN

Main Track



STOP Key:
 short press: change normal operation / STOP
 hold until LED blinks red (ca. 3s): restart
 hold until LED blinks purple (ca. 5s): reset to factory default settings

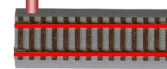
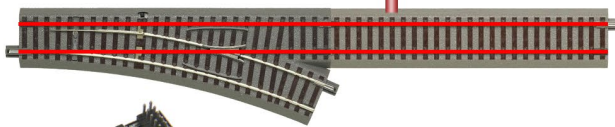
LED Status:
 — constant blue normal operation
 — blinking blue STOP
 — constant green programming
 — blinking red short circuit

Main Track:
 3.2A, short circuit detection
 Track voltage is 1V below supply voltage.

Prog Track

CV Programming
 according NMRA S-9.2.3
 Reading/writing CV bit- and byte-wise in direct mode

MM Programming
 6021 programming mode
 Z21 FW V1.23 or higher



2 Rails DCC



DCC Loco-Decoder
 14/28/128 speed steps, F0 bis F28
 RailCom (can be switched off)
 POM write
 POM read (RailCom, Z21 FW V1.22 or higher)
 Short address range from 1 to 99
 Long address range from 100 to 9999



DCC Turnout- and Signal-Decoder
 Configuration of sophisticated decoder by using accessory CV-programming with Z21 FW 1.22 (or higher) and Z21_Maintenance.exe.
 2044 DCC-turnouts addressable.

Hint: CV-programming can be cancelled by shortly pressing the STOP key.

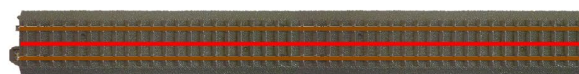
3 Rails MM

Please note: the polarity when connecting 3-rail tracks and MM turnout decoders! Some MM turnout decoders must be connected with proper polarity in order to process the MM signal correctly (see decoder manual).

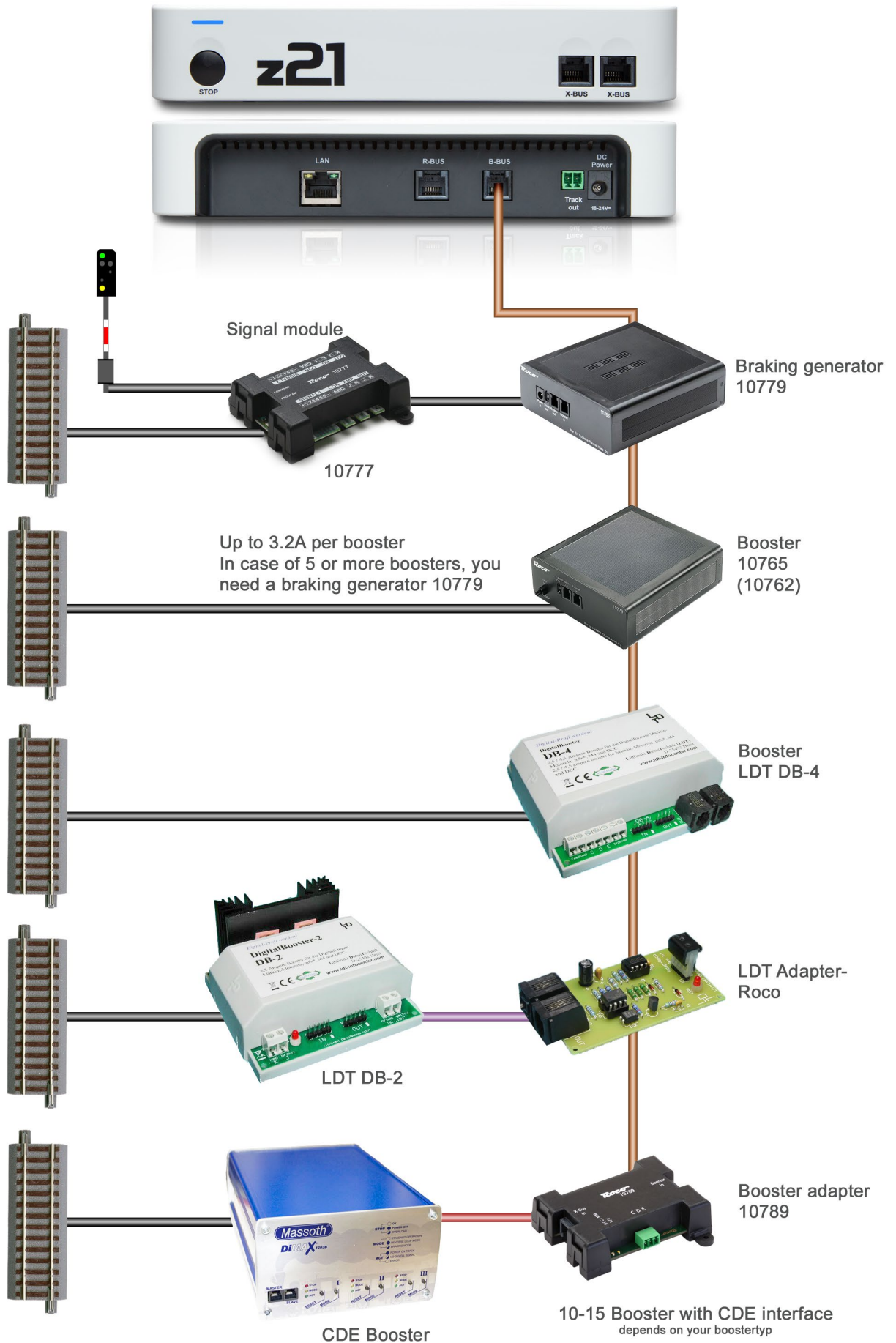


MMI and MMII Loco-Decoder:
 MMI: address 1 to 80, 14 speed steps
 MMII: address 1 to 255, 28 speed steps

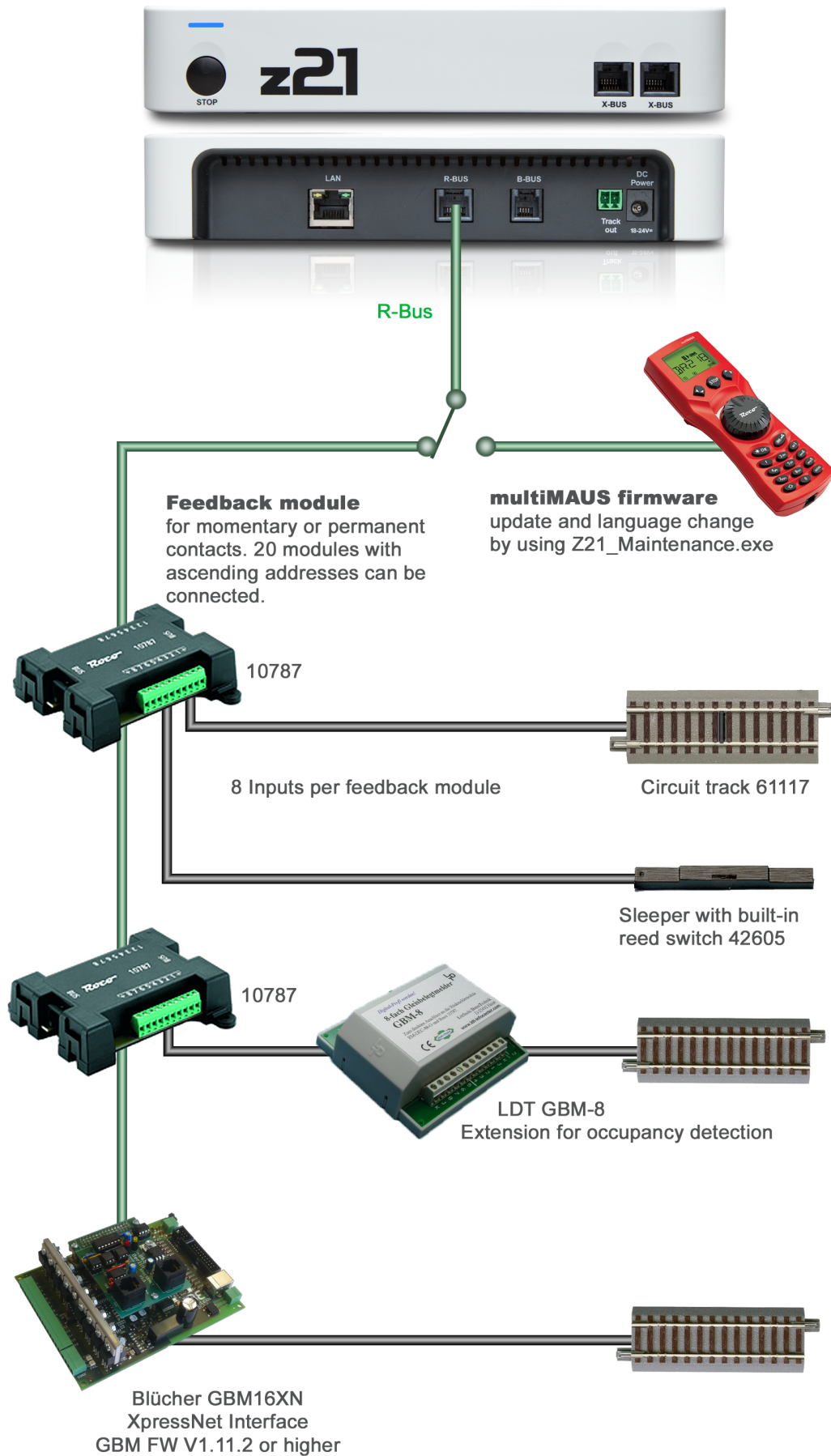
MM Turnout-Decoder
 Z21 FW V1.11 or higher
 255 MM turnouts addressable



Booster- BUS



R- BUS



X-BUS



XBUS

POM Reading with multiMAUS
FW V1.04 and Z21 FW V1.22 or higher



RouteControl

Lokmaus2

Lokmaus3

multiMAUS



Funky
Z21 FW V1.24
or higher

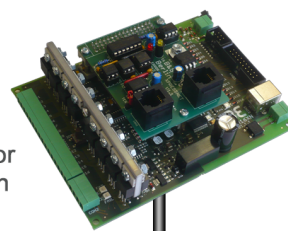
Lenz LH90
Z21 FW V1.24
or higher

Lenz LH30

Lenz LH100



Occupancy detector
for PC- automation
Rocrail, iTrain, ...



Blücher GBM16XN
XpressNet Interface
Z21 FW V1.24 or higher
GBM FW V1.11.2 or higher

LAN mobile



Roco Z21 App



Z21 Updater
firmware update



DigiTrains

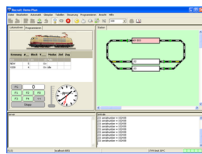


iRoc, padRoc,
andRoc
(n conjunction
with PC)

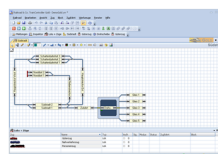
LAN PC



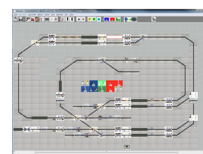
iTrain
V3.0 or higher



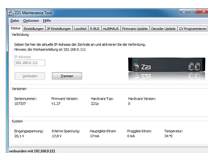
Rocrail
Rev. 4635 or higher



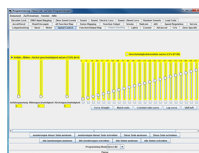
TrainController
V8.0 B4 or higher



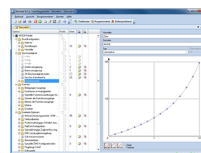
ModellStellwerk
V8.20 or higher



Z21 Maintenance
firmware update,
use WINE
for Linux and Mac



JMRI DecoderPro
V3.11 or higher



TrainProgrammer
V8.0 D1 or higher